

## EMIS-2017 Community Report Vol. 2

November 2020

The European MSM Internet Survey is the largest international and multi-language study on gay, bi- sexual and other men who have sex with men (MSM), happened between October 2017 and end of January 2018. This community report is the second in which we would like to give feedback to you.

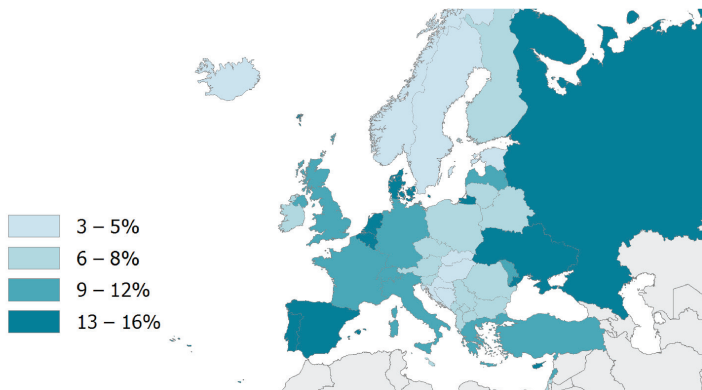
## KEY FINDINGS FOR THE 13,000 HIV-DIAGNOSED RESPONDENTS IN 48 COUNTRIES



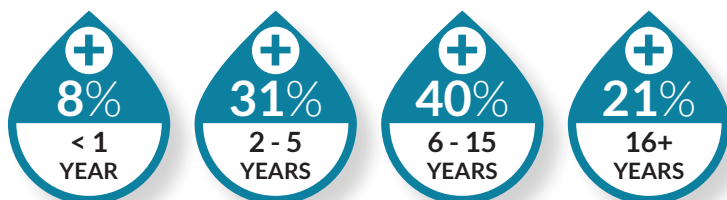
This 2nd EMIS-2017 Community Report published for World AIDS Day 2020 is based on the 13,172 (10%) men who indicated they were diagnosed positive for HIV and living in one of the 48 countries on the map. Much appreciation to these and the 137,000 men who completed EMIS-2017. This and the national and community reports are available at [www.emis2017.eu](http://www.emis2017.eu)

### WHERE YOU LIVE

% OF EMIS-2017 RESPONDENTS EVER DIAGNOSED WITH HIV.



### NUMBER OF YEARS DIAGNOSED WITH HIV



### HEPATITIS

**65%** RECEIVED A FULL COURSE OF HEPATITIS A VACCINE

**73%** RECEIVED A FULL COURSE OF HEPATITIS B VACCINE

**22%** EVER CO-DIAGNOSED WITH HEPATITIS B OR C

### YOUR HIV TREATMENT

**96%** OF YOU WERE HAVING YOUR HIV MONITORED IN THE PREVIOUS SIX MONTHS

**90%** OF YOU WERE ON ANTI-RETROVIRAL TREATMENT (ART)

**82%** OF YOU HAD SUPPRESSED VIRAL LOAD (UNDETECTABLE)

THE HIV CARE CASCADE SHOWED BETTER OUTCOMES IN THE NORTH AND IN THE WEST OF EUROPE THAN IN THE SOUTH AND THE EAST OF EUROPE.

### AGE, MIGRATION, PARTNERSHIP

**4%**  
14-24

**36%**  
25-39

**45%**  
40-54

**12%**  
55-64

**3%**  
65+

**18%** WERE BORN ABROAD

**51%** SINGLE

**7%** I AM NOT SURE: IF I HAVE A STEADY PARTNER / IT'S COMPLICATED

**42%** STEADY PARTNER

AMONG THE 42% WITH A STEADY PARTNER, 43% HAD A PARTNER WHO ALSO LIVED WITH DIAGNOSED HIV.

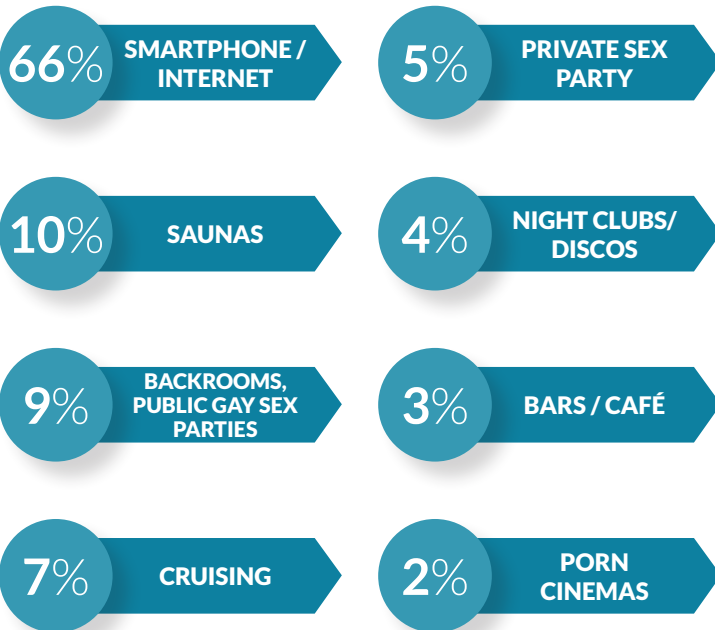


## EMIS-2017 Community Report Vol. 2

November 2020

The European MSM Internet Survey is the largest international and multi-language study on gay, bi- sexual and other men who have sex with men (MSM), happened between October 2017 and end of January 2018. This community report is the second in which we would like to give feedback to you.

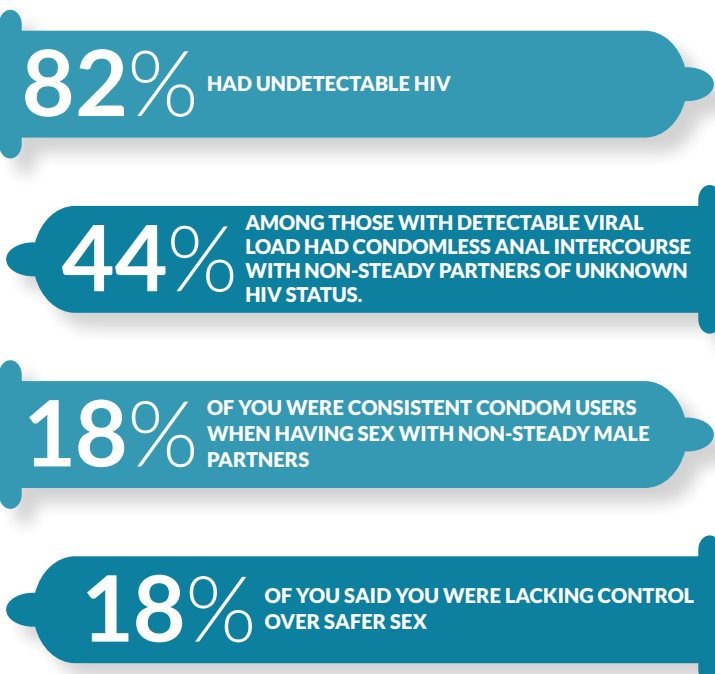
### WHERE YOU MET-UP THE LAST TIME YOU HAD SEX WITH A NON-STEADY MALE PARTNER



### STI DIAGNOSES IN PREVIOUS YEAR



### SEXUAL SAFETY



### KNOWLEDGE on U=U

**! 85%**

of HIV+ men knew that a person with undetectable viral load cannot pass on HIV. Among all respondents (EMIS-2017 Community Report Vol.1) 57% were aware of this fact. This highlights the need for continued promotion about U=U among gay and bisexual men in general, and in HIV-positive gay men (and their health providers) in particular.

### YOUR ECONOMIC SITUATION



### SEXUAL HEALTH



## EMIS-2017 Community Report Vol. 2

November 2020

The European MSM Internet Survey is the largest international and multi-language study on gay, bi- sexual and other men who have sex with men (MSM), happened between October 2017 and end of January 2018. This community report is the second in which we would like to give feedback to you.

### MINORITY STRESS

19%

OF YOU WERE VERBALLY INSULTED IN THE PREVIOUS YEAR

17%

OF YOU WERE NOT OUT OR ONLY OUT TO A FEW PEOPLE

8%

OF YOU SHOWED SIGNS OF SEVERE ANXIETY AND DEPRESSION

25%

THOUGHT ABOUT 'HURTING YOURSELF' OR THOUGHT 'I WOULD BE BETTER OFF DEAD' IN THE PAST TWO WEEKS

### PERCENTAGE OF HIV+ MEN WHO USED THESE DRUGS IN THE PREVIOUS YEAR



63% USED  
**POPPERS**



46% USED  
**ERECTILE DYSFUNCTION DRUGS**



34% USED  
**CANNABIS**



23% USED  
**ECSTASY PILLS OR POWDER**



21% USED  
**COCAINE**



16% USED  
**SEDATIVES / TRANQUILIZERS**

### DRUG USE

6%

OF YOU INJECTED DRUGS (EXCLUDING STEROIDS) IN THE LAST YEAR

17%

USED STIMULANT DRUGS TO MAKE SEX MORE INTENSE OR LAST LONGER IN THE LAST FOUR WEEKS

### SUBSTANCE USE SERVICES

! 18%

OF ALL HIV-DIAGNOSED RESPONDENTS HAD SIGNS OF ALCOHOL DEPENDENCY, BUT ONLY 12% OF THOSE HAD CONSULTED A HEALTH PROFESSIONAL ABOUT THEIR ALCOHOL USE

! 10%

OF ALL HIV-DIAGNOSED RESPONDENTS WERE WORRIED ABOUT THEIR DRUG USE, BUT ONLY 21% OF THOSE HAD CONSULTED A HEALTH PROFESSIONAL ABOUT THEIR DRUG USE

#### EMIS-2017

WAS CARRIED OUT BY SIGMA RESEARCH (LONDON) AND WAS FUNDED BY THE HEALTH PROGRAMME (2014-2020) OF THE EUROPEAN UNION. THIS COMMUNITY REPORT VOL. 2 IS PRESENTED TO YOU BY GAY HEALTH NETWORK (IRELAND), SIGMA RESEARCH, AND IS FUNDED BY THE HEALTH SERVICE EXECUTIVE (HSE) IRELAND

#### A HUGE THANKS FOR THE TRANSLATIONS TO:



ARABIC/BASEL HURBOUB (NUREMBERG), PORTUGUESE /DIEGO(DUBLIN), POLISH/INGA WOJICK (DUBLIN).